

AVMA 2023 Disaster Situational Awareness Report #4 Thursday June 1, 2023 Super Typhoon Mawar – Guam and Commonwealth of Northern Mariana Islands (CNMI)

- Wednesday May 23, 2023, a category 4 storm (Mawar) passed between Guam and the CNMI.
- Up to 98% of power customers were without power at the height of the storm. Power is slowly being restored.
- Many water treatment plants and all sewer treatment plants were non-functional after the storm.
- Significant wind and water damage is reported along with closure of some airports and ports.
- No deaths have been reported.

Super Typhoon Mawar – Guam/CNMI

Situation: (HLT Advisory #22, as of 5:00 a.m. ET)

Typhoon force winds has diminished early this morning on Guam and Rota. Mawar is expected to have a slight increase in forward speed over the next 24 hours with little change in strength as it moves away from Guam. Tropical cyclone watches and warnings are no longer in effect. Flood Watches are in effect for Guam, Rota, Tinian, and Saipan.

Lifelines: (SLB #1, as of 7:30 a.m. ET)

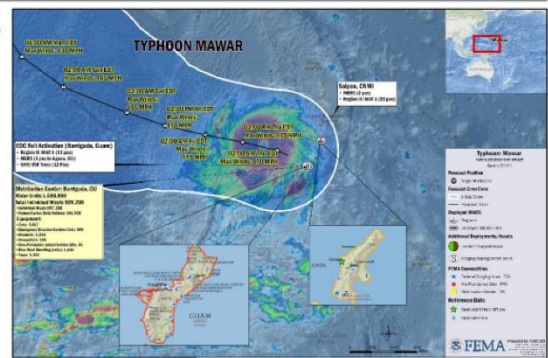
- Safety and Security: Mandatory evacuations ; schools and government offices closed
- Food, Water, Shelter: GU: 21 (+11) shelters open; CNMI: 13 (+6) shelters open combined total of 2,062 (+1,135) occupants
- Health and Medical: 10+ minor injuries reported; treated & released
- Energy: GU nearly all critical facilities have back-up generator installed; 62 generators enroute to Guam
 - Approximately 51,000 (98%) customers are without power in Guam; 942 (100%) customers are without power in Rota;
- Transportation: CNMI 2 of 3 airports remain open with daytime operations only; GU Andersen Air Force Base is operational for rotary wing only; Won Pat International Airport remains closed with a 6/1 estimate for reopening
- GU and CNMI ports at condition ZULU (closed to all traffic); major transportation routes and hubs have been shut down

Territory/Local Response:

- GU EOC at Full Activation; Governor declared a State of Emergency
- CNMI EOC at Partial Activation (Rota is at Full Activation)
- GU, CNMI, and military bases placed at Condition of Readiness (COR) 1

FEMA/Federal Response:

- Region IX: RWC at Enhanced Watch; RRCC Rostered; IMAT-1 deployed to GU and CNMI
- ESFs 1,3,4,7,8,10-14, USCG, DCE, USACE SMEs and power Planning and Response Team (PRT) in Guam; DOD LNOs in GU and CNMI; DOD DCO supporting from CA; USCG SAR in HI; USACE roofing PRT SMEs in HI
- FEMA HQ
 - NRCC activated 24/7
 - Emergency Declarations FEMA-3593-EM-MP and FEMA-3594-EM-GU approved May 22
 - National IMAT Red deployed to HI for onward movement, Region VIII IMAT on alert to support Region IX
 - Logistics: SMT Tracy/ISB Alpha deployed to GU; SMT HI on standby
 - Distribution Centers in GU, HI, and CA adequately stocked and ready to deploy commodities; 105 generators staged in GU
 - Transportation Augmentation Contract activated for Guam and CNMI for multi-modal transportation
 - National Evacuation Air Transportation Support Service and Aviation Ground Support contracts activated to support emergency evacuation post impact
 - MERS: 8 personnel and communications equipment deployed to GU; 2 personnel in Saipan; 3 on standby in HI
 - US&R IST Blue capable to deploy on a 2-hour notice



National Watch Center

Veterinary Response

- AVMA has confirmed that veterinary facilities and animal shelters have been impacted.
- Guam already had a massive problem with stray dogs and the impact of Mawar is likely to add to the problem. A 2014 estimate indicated that the 310 sq mile island had 30,000 stray dogs.
- Attempts are being made to get an animal assessment team to the area, but travel is very limited.

AVMA provides disaster preparedness, response, and recovery information at <https://www.avma.org/resources-tools/animal-health-and-welfare/disaster-preparedness> including information on grants available from AVMF for veterinarians who are either directly impacted by a disaster or who provide care to animals impacted by disasters.

Please contact Dr. Warren J. Hess at whess@avma.org with corrections or updates.